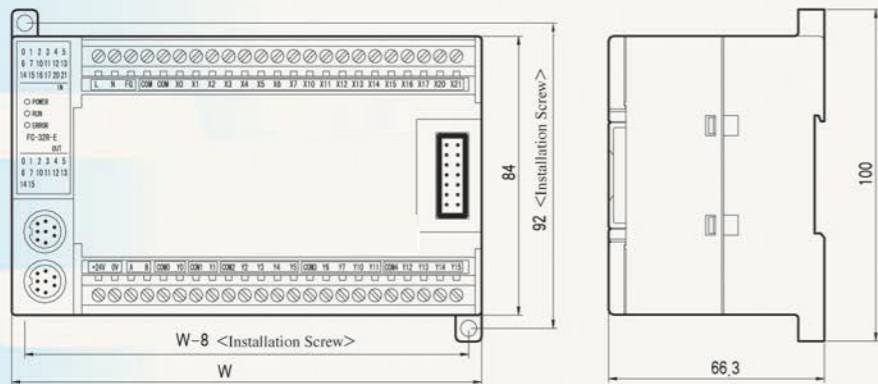


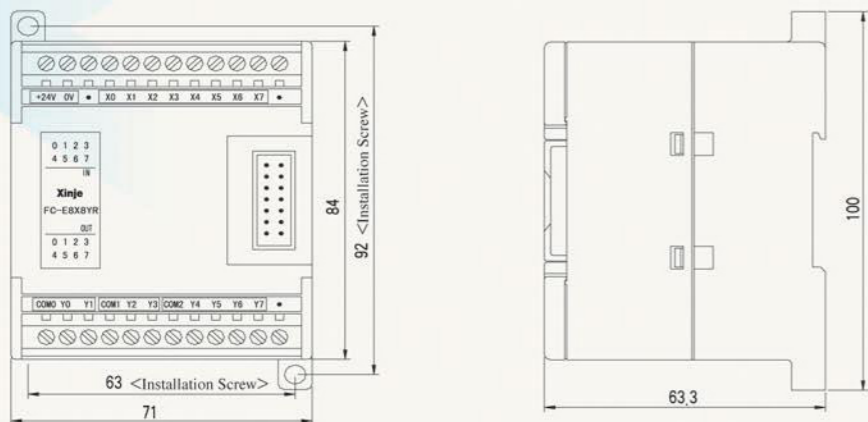
# 外型尺寸

## FC Series PLC Basic unit



Model	W (mm)
FC-32R (T) -E (C)	140
FC-24R (T) -E (C)	140
FC-16R (T) -E (C)	140

## FC Series PLC Expansion unit and function modules



Note: modules of analog quantity, I/O expansion modules and special function modules have the same size

Franchised dealer

Small size integral PLC  
 Equipped with various human-computer interface with large or small size  
 Supporting various expansion modules with special function  
 Realize multi-function medium-small scale control quickly

## General PLC



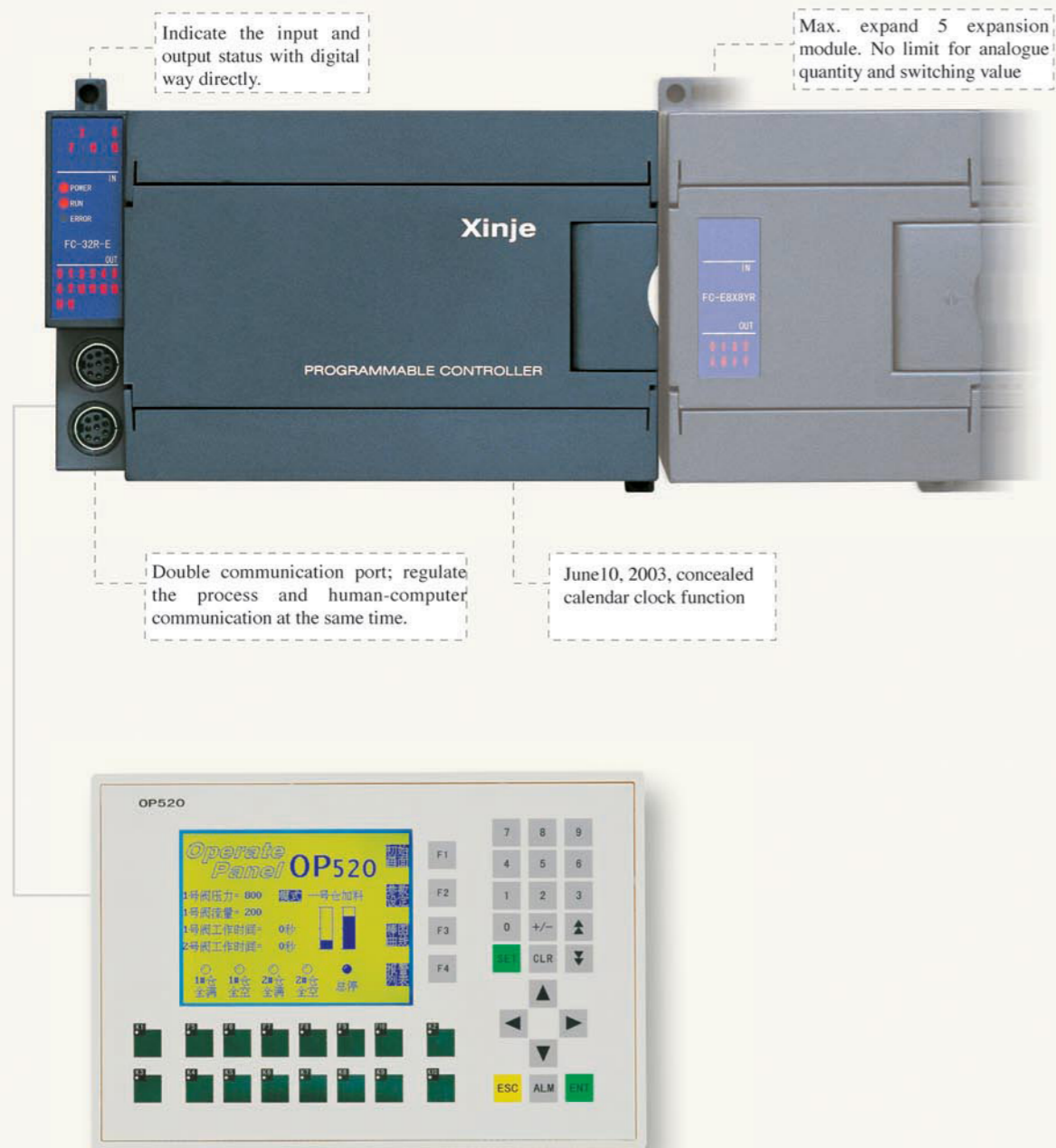
FC Series programmable controller



## With Xinje Electronic human-Computer products

### Realize human-computer interactive control easily

FC Series PLC integrates many advantageous functions and its appearance is very small, which can be compared with international first class products. The software is simple and direct, which can be used at will. Double communication port makes you easily deal with connection of human and machine and control of frequency converter. The manufacturer's service can meet your satisfaction.



## FC Series PLC Typical function

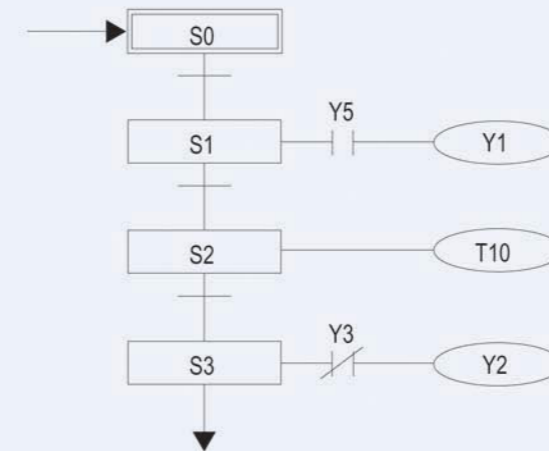
### Communication function

FC Series PLC has two communication Ports: Port 1, Port 2.

Port1:RS-232C Port, connect epigyny machine, human-computer interface program or regulation.  
Port2:RS-485, RS-232C Port.

The user can define it into different mode for operation.

Networking or connecting intelligent instrument, frequency converter, etc.



### Simple flow instruction

With regard to complicate order control, if it is written by traditional ladder chart, it will be complicate and can't be modified easily. The flow instruction divides the complicate process into independent procedure section according to their orders. Time sequentially, each program is relatively independent and operates orderly, in this way, the program writing person and regulating person can solve the problem quickly.

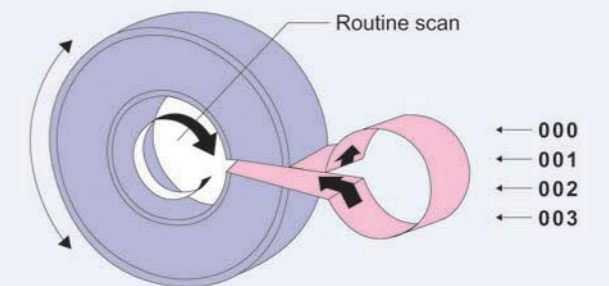
### Interruption function

#### Outside interruption function

If X000、X001 are not input in high speed counting, it can be used as outside interruption input. Each input has one outside interruption and the advancing edge of input touches off interruption.

#### Timing interruption function

According to the set value of FW175, if the set time is on, the main procedure will be interrupted and then the sub procedure will also be interrupted. After the completion of this action, it will return to breakpoint and continue main program.

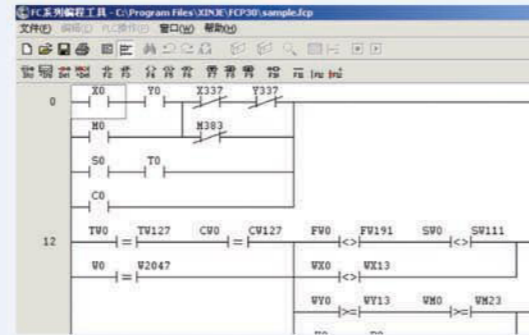


## Convenient, quick and friendly programming tool FCP30

### Program environment

The program environment of FCP30 Software is simple and efficient and the user can master it quickly. Rich instruction set, order control, program control, data treatment, communication instruction, etc, make you operation with great facility.

Directly program by ladder chart, the program is direct and convenient



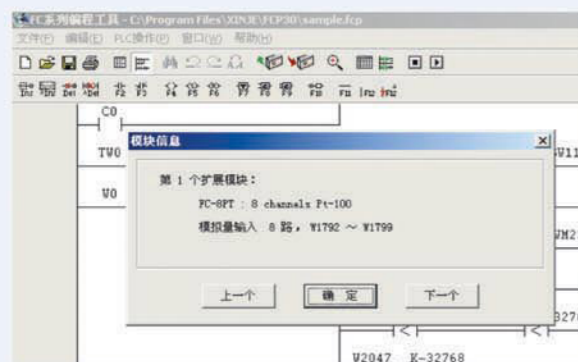
```

0 LD X0
1 AND Y0
2 OR M0
3 LDI X337
4 ANI Y337
5 ORI M383
6 ANDLD
7 LD S0
8 AND T0
9 ORLD
10 OR C0
11 OUT M100
12 LD= TV0 TV127
14 AND= CW0 CW127
16 OR= V0 V2047
18 MCS
19 LD<> FW0 FW191
21 AND= CW0 CW111
    
```

Meanwhile support logic instruction program to cut, copy, and stick at will.

### On-line control

Directly monitor the program by ladder chart or open the data window to modify monitoring data.



### Modules information

Check PLC information, including nomenclature and expansion modules, and PLC scanning duration.

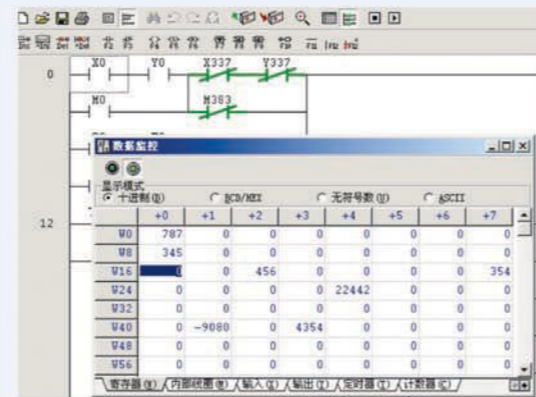
## FC Series PLC basic

### Normal specification

Item	Specification
Insulation voltage	Above DC 500V 2MΩ
Antinoise	1000V 1μS Pulse for one minute
Environment temperature	0-60
Environment humidity	5-95%
Communication Port1	RS-232C Port, connect epigyny machine, human-computer interface program writing or regulation
Communication Port2	RS-232/RS-485 Port, networking or connecting intelligent instrument, frequency converter, etc.
Installation	Screw fastening or guiding rail installation
Earthing	The third type earthing (can't be connected with strong power system)
Outside dimension	140mm × 84mm × 70mm

### Feature specification


Item	Specification	
Program operation mode	Circulation scanning method, timing scanning method	
Program writing mode	Ladder chart and flow	
Instruction type	130	
Treatment speed	1μS	
Power failure holding	Use Flash ROM and lithium battery	
User program capacity	2560 steps	
Nomenclature Max. I/O tally	Input 18 points / output 14 points	
System Max. I/O tally	Input and output 112 points totally	
Internal coil tally	384 points	
Timer (T)	Tally	128 points
	Specification	100ms timer: set time 0.1-3276.7seconds 100ms timer: set time 0.01-327.67 seconds
Counter (C)	Tally	128 points
	Specification	Plus counter: set value K0-32767 Plus and minus counter: set value K-2147483648 -2147483647
Data register (W)	2048 characters	
Flash ROM register (FW)	192 characters	
Special coil (SM)	128points	
Special register(SW)	112 characters	
High speed counter/outside interruption	7 types	
Timing scanning interval setting	0-255ms	
Calendar clock	Year/month/date/hour/minute/second/week	
High speed counting/interruption	Two lines 2.5K(15K is under development)/24 points interruption	
Password protection	8 digit length, totally two level password	
Self-diagnose function	Power on self inspection,monitoring timer, grammar inspection	



## Schedule of FC Series PLC Series Composition










In order to fit to more powers and the requirements of various output type, FC Series PLC noumenon consists of 12 models, including A/C input and D/C input, relay output / transistor output. All noumenons have high speed counting, double communication port and expansion function.

### Noumenon unit

	16points noumenon 10 points input / 6 points output	24points noumenon 14 points input / 10 points output	32points noumenon 18 points input / 14 points output
<b>AC Relay</b>	 FC-16R-E	 FC-24R-E	 FC-32R-E
<b>AC Transistor</b>	 FC-16T-E	 FC-24T-E	 FC-32T-E
<b>DC Relay</b>	 FC-16R-C	 FC-24R-C	 FC-32R-C
<b>DC Transistor</b>	 FC-16T-C	 FC-24T-C	 FC-32T-C

### Expansion modules

FC noumenon can expand 5 modules maximally and there is no limitation for modules types. The expansion modules shall define the relevant register according to their order and operation of program is quite easy.

<b>Switching value</b>	 8 points input FC-E8X	 16 pathway input FC-E16X
	 8 points output FC-E8Y	 16 Pathway output FC-E16Y
<b>Analog quantity</b>	 4/8 pathway Analog quantity output FC-4/8AD	 4 Pathway AD/ 2 Pathway DA FC-4AD2DA
	 2/4pathway Analog quantity output FC-2/4DA	 4/8pathway Thermo couple collection FC-4/8TC
		 4/8 pathway PT100 collection FC-4/8PT

## Schedule of FC Series PLC Noumenon and expansion modules

Name	Model	Power	Specification			
			Input		Output	
Basic unit	FC-32R-E	AC100-240V	18points	DC24V ON >4mA OFF <1.5mA	14points	Relay output
	FC-24R-E		14points		10points	3A/1 point
	FC-16R-E		10points		6points	5A/4points
	FC-32T-E		18points		14points	Transistor output
	FC-24T-E		14points		10points	0.8A/1 point
	FC-16T-E		10points		6points	1.2A/4points
	FC-32R-C	DC21.6-26.4V	18points		14points	Relay output
	FC-24R-C		14points		10points	3A/1 point
	FC-16R-C		10points		6points	5A/4points
	FC-32T-C		18points		14points	Transistor output
	FC-24T-C		14points		10points	0.8A/1 point
	FC-16T-C		10points		6 points	1.2A/4points
Switching value Expansion modules	FC-E8X	DC21.6-26.4V	8points	-----	-----	-----
	FC-E16X		16points	-----	-----	-----
	FC-E8YR		-----	8points	Relay output	
	FC-E16YR		-----	16points	3A/1 point	
	FC-E8X8YR		8points	8points	5A/4points	
	FC-E8YT		-----	8points	Transistor output	
	FC-E16YT		-----	16points	0.8A/1 point	
	FC-E8X8YT		8points	8points	1.2A/4points	
Analog quantity Expansion modules	FC-4AD	12Bit, 4 pathway analog quantity input modules; Current and voltage is selectable				
	FC-8AD	12Bit, 8 pathway analog quantity input modules; Current and voltage is selectable				
	FC-2DA	12Bit, 2 pathway analog quantity output modules; Current and voltage is selectable				
	FC-4DA	12Bit, 4 pathway analog quantity output modules; Current and voltage is selectable				
	FC-4AD2DA	12Bit, 4 pathway analog quantity input / 2 pathway analog quantity output modules				
	FC-4PT	-100-350℃, 4 path way Pt100 temperature collection modules, precision 0.2 degree				
	FC-8PT	-100-350℃, 8 pathway Pt100 temperature collection modules, precision 0.2 degree				
	FC-4PT4AD	12Bit, 4 pathway analog quantity input; -100-350℃, 4 pathway Pt100 temperature collection				
	FC-4TC	0-1200℃, 4 pathway K, E thermocouple temperature collection modules, precision 0.5 degree				
	FC-8TC	0-1200℃, 8 pathway K, E thermocouple temperature collection modules, precision 0.5 degree				
Special expansion modules	MD-8AD	8 pathway 12Bit 4-20mA, 0-5V, 0-10V analog quantity input				
	MD-16AD	16 pathway 12Bit 4-20mA, 0-5V, 0-10V analog quantity input				
	MD-4AD-PT	4 pathway Pt100 temperature collection				
	MD-8AD-PT	8 pathway Pt100 temperature collection				
	MD-8AD-TC	8 pathway K, E thermocouple temperature collection				