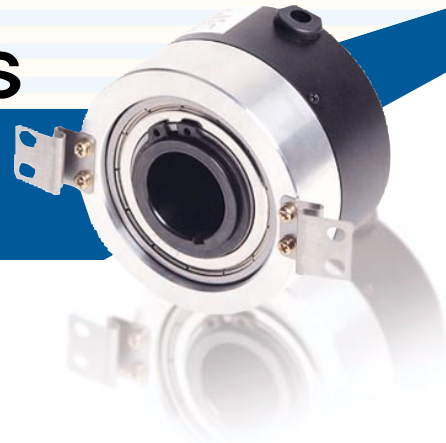
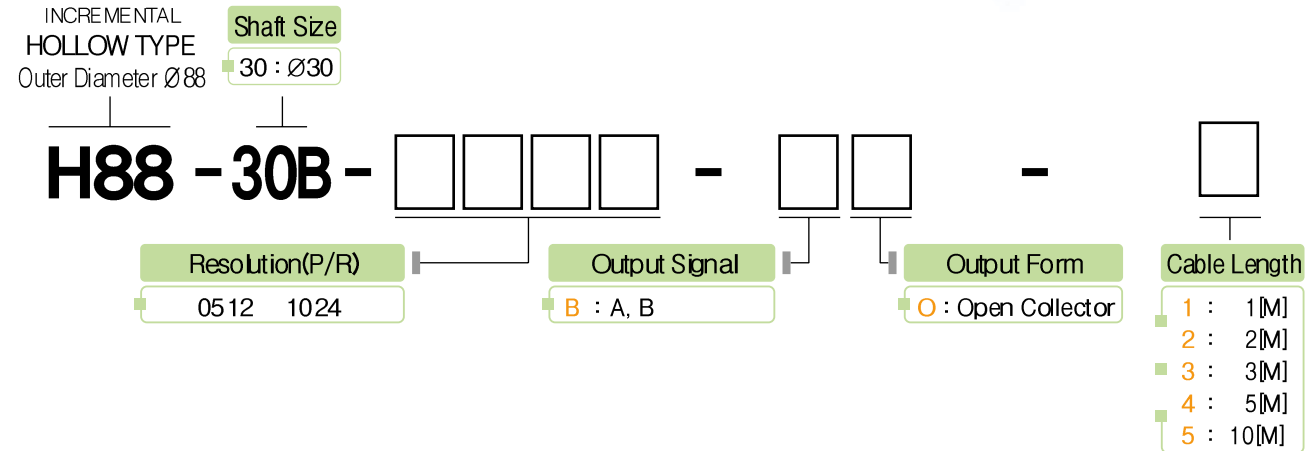


# H88-30B Series

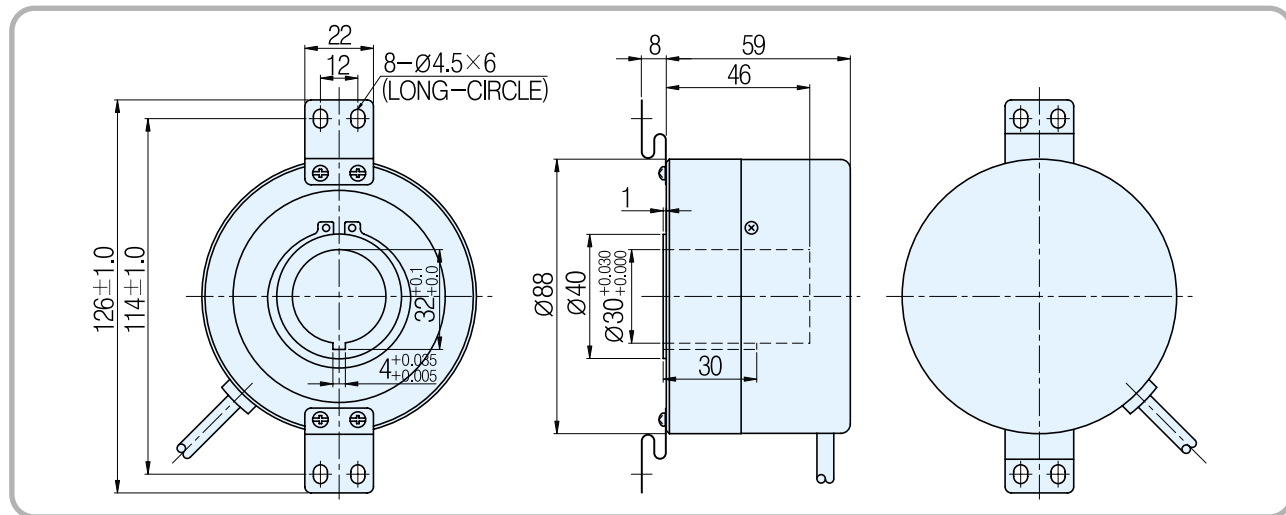
■Features : Elevator, Parking system, Industrial motor  
Easy to be attached, Customized design,  
Prompt delivery



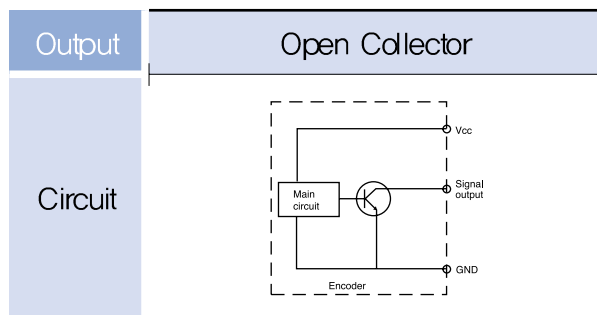
## Model



## External Dimension



## Output Circuit



## Electrical Spec.

Output type	Open Collector
Power Supply	DC +15[V] Ripple p-p : less than 5%
Consuming Current ( In case of no load )	70mA Max
Maximum Response Frequency	100 KHz
Output voltage	Less than V <sub>L</sub> 0.5[V] / More than V <sub>H</sub> 10[V]
Output current	Less than 20mA
Rising, decline time	Less than 3μs
Common conditions	In case that the cable length of output side is 1[M] and load resistance is less than 1[kΩ]

## Mechanical Spec.

Starting Torque	800g - cm Max
Maximum number of revolution	3000 rpm
Bearing lifetime	50,000[hr](In case of rotating by 3000rpm)
Allowable Shaft Load	Radial : 5.0kg Max Axial : 2.5kg Max
Position deflection of allowable shaft	Radial : Less than 0.05 mm Axial : Less than 0.2mm
Connection Table	3P(AWG26) Shield CABLE
weight	900g

## Rigid Spec.

Operating Temp. Range	-10°C ~ +70°C (No freezing)
Preserving temp	-20°C ~ +85°C
Using humidity	35% ~ 80% RH
Preserving Humidity	35% ~ 85% RH
Internal Vibration	5G
Internal Shock	100G
Degree of Protection	IP 50

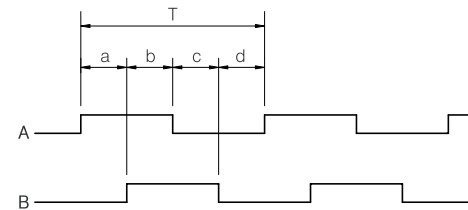
## Output Phase Shift

CCW → Counterclockwise viewed from shaft end

$a + b, c + d = T/2 \pm T/10$   
 $a, b, c, d = T/4 \pm T/10$



## Open Collector



## Connection Table

Cable's Color	Connection Table
Output Form	Open Collector
Red	Vcc
Black	GND
Green	A Sig
Orange	A Sig GND
Brown	B Sig
White	B Sig GND
Shield	CASE Shield